



## Backing flange PP-Steel metric For socket systems metric and BS

### Model:

- **Bolt circle PN 10**
- PP-GF (30% glass-fibre reinforced) with steel ring
- UV-resistant. Applicable for outside applications
- Connecting dimension: ISO 7005, EN 1092, BS 4504, DIN 2501

AL: number of holes

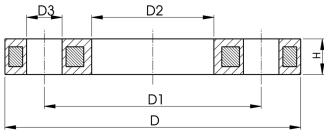
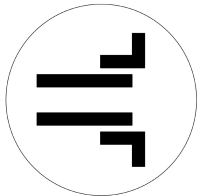
<sup>1)</sup> Suitable for socket -and butt fusion systems

<sup>2)</sup> Not for BS

<sup>3)</sup> Connecting dimension: ISO 2536. bolt circle acc. DN125. suitable for flange adaptor d125/ DN100

<sup>4)</sup> Connecting dimension: ISO 2536. bolt circle acc. DN225. suitable for flange adaptor d250/ DN250

<sup>5)</sup> Combined version, bolt circle metric - ANSI



	d	DN	PN	Code	Weight	D1	D3	D2	D	H	AL	SC
	(mm)	(mm)	(bar)		(kg)	(mm)	(mm)	(mm)	(mm)	(mm)		
1	20	15	16	<b>727 700 206</b>	0.216	65	14	28	95	12	4	M12
1	25	20	16	<b>727 700 207</b>	0.279	75	14	34	105	12	4	M12
1	32	25	16	<b>727 700 208</b>	0.429	85	14	42	115	16	4	M12
1	40	32	16	<b>727 700 209</b>	0.621	100	18	51	140	16	4	M16
1	50	40	16	<b>727 700 210</b>	0.722	110	18	62	150	20	4	M16
1	63	50	16	<b>727 700 211</b>	1.082	125	18	78	165	20	4	M16
1	75	65	16	<b>727 700 212</b>	1.349	145	18	92	185	20	4	M16
	90	80	16	<b>727 700 213</b>	1.369	160	18	110	200	20	8	M16
2	110	100	16	<b>727 700 214</b>	1.522	180	18	133	220	20	8	M16
3	125	125	16	<b>727 700 815</b>	2.475	210	18	150	250	26	8	M16
	140	125	16	<b>727 700 816</b>	2.033	210	18	167	250	26	8	M16
2/5	160	150	16	<b>727 700 817</b>	3.167	241	22	190	285	26	8	M20
5	200	200	16	<b>727 700 819</b>	6.143	297	22	226	340	29	8	M20
5	225	200	16	<b>727 700 820</b>	4.448	297	22	250	340	29	8	M20
	250	250	16	<b>727 700 821</b>	7.179	350	22	277	395	32	12	M20
4	250	225	16	<b>727 700 031</b>	8.340	325	22	277	395	32	8	M20
	280	250	16	<b>727 700 822</b>	5.547	350	22	310	395	32	12	M20
	315	300	16	<b>727 700 823</b>	6.980	400	22	348	445	36	12	M20
	355	350	16	<b>727 700 824</b>	12.465	460	23	388	515	42	16	M20
	400	400	16	<b>727 700 825</b>	17.607	515	26	442	574	42	16	M24

The technical data are not binding. They neither constitute expressly warranted characteristics nor guaranteed properties nor a guaranteed durability. They are subject to modification. Our General Terms of Sale apply.

Georg Fischer Piping Systems Ltd, Postfach, CH-8201 Schaffhausen/Switzerland

Phone +41 -(0)52-631 1111

e-mail: [info.ps@georgfischer.com](mailto:info.ps@georgfischer.com)

Internet: <http://www.gfps.com>